

GREENFIELD MEADOWS DIVISION 5

LOCATED IN THE NORTH EAST 1/4 OF SECTION 7, TOWNSHIP 6 SOUTH, RANGE 35 EAST, BOISE MERIDIAN, BANNOCK COUNTY, IDAHO

NE COR SEC 12, T. 6 S., R. 34 E.,
B.M. FOUND BANNOCK COUNTY
BCM PER CP&F INST NO. 819177

NORTH 1/4 CORNER SEC
7, T. 6 S., R. 35 E., B.M.
FOUND 2" ALUM. CAP
STAMPED PLS 942 PER
CP&F NO. 94011573

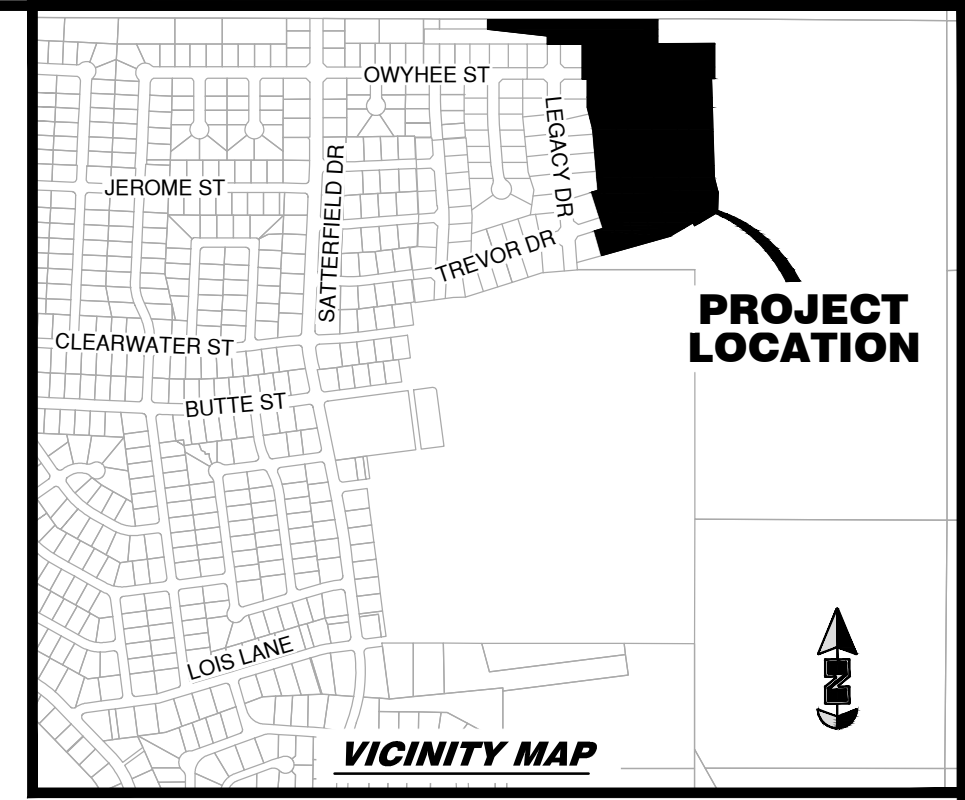
JAMES W, DAVID J AND ROBERT E HART
INSTRUMENT NOS. 20711033 & 20711145

10' WIDE IDAHO POWER
POWER LINE EASEMENT
INST. NO. 784089

35' WIDE PIPELINE EASEMENT
J.R. SIMPLOT COMPANY
INST. NO. 893175 (SEE NOTE 7)

NORTHEAST CORNER OF SECTION 7.
FOUND 5/8 REBAR WITH 2 INCH
ALUMINUM CAP MARKED LS 942. PER
CP & F NO. 94012405.

NW COR SEC 7, T. 6 S., R. 35
E., B.M. FOUND BANNOCK
COUNTY BCM PER CP&F
INST NO. 628484

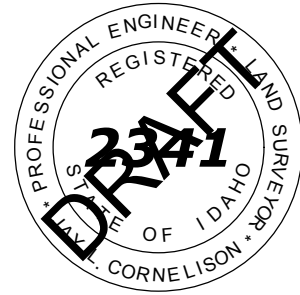
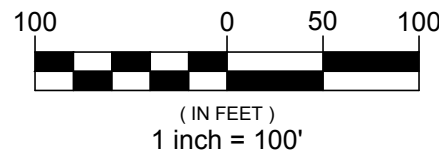


PROJECT
LOCATION

VICINITY MAP



GRAPHIC SCALE



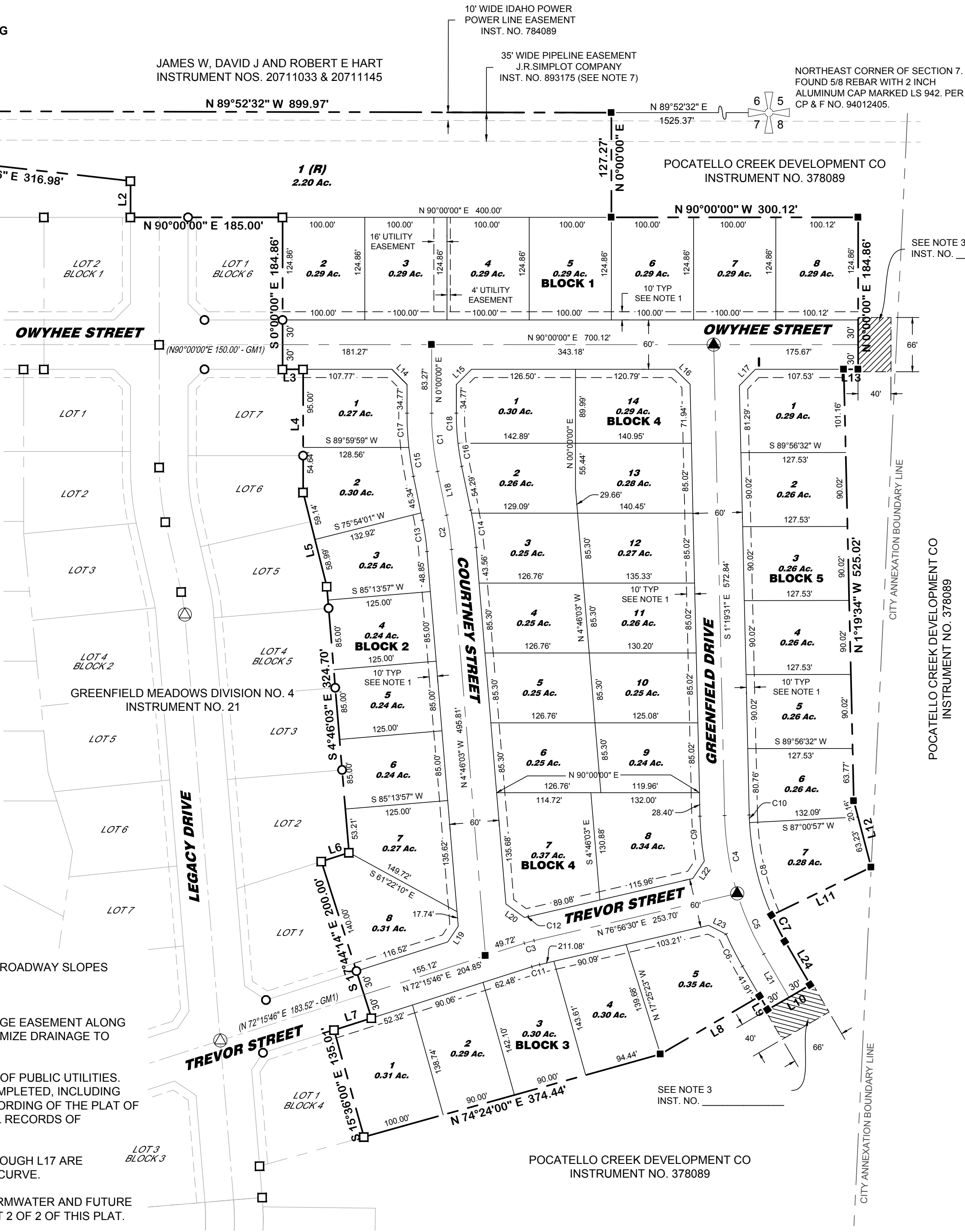
LINE TABLE					
#	BEARING	DISTANCE	#	BEARING	DISTANCE
L1	S 00°00'00" W	49.44'	L13	N 90°00'00" E	17.44'
L2	S 00°00'00" W	44.17'	L14	S 45°00'00" E	26.17'
L3	S 90°00'00" W	25.00'	L15	N 45°00'00" E	26.16'
L4	S 00°00'00" W	149.64'	L16	S 45°39'45" E	25.86'
L5	S 14°05'59" E	118.13'	L17	N 44°20'15" E	27.96'
L6	S 72°15'46" W	35.22'	L18	N 11°40'54" W	54.29'
L7	S 72°15'46" W	47.75'	L19	S 33°44'51" W	23.04'
L8	N 59°43'53" E	140.00'	L20	N 53°54'47" W	28.08'
L9	S 30°16'07" E	19.07'	L21	S 30°16'07" E	60.98'
L10	N 59°43'53" E	140.00'	L22	S 33°39'36" W	25.37'
L11	N 30°16'07" W	60.98'	L23	S 63°20'40" E	23.64'
L12	N 14°42'39" W	83.39'	L24	N 64°15'58" E	134.44'

REFERENCE DOCUMENTS

DISTANCE AND BEARING PER GREENFIELD MEADOWS
DIVISION NO. 4 (RECORD INST. NO. 21300684)

NOTES

- EASEMENTS ARE 10' WIDE AND ARE FOR PUBLIC UTILITIES, DRAINAGE AND ROADWAY SLOPES UNLESS OTHERWISE NOTED.
- EASEMENT NOT DEPICTED:
ALL LOTS IN THIS SUBDIVISION ARE SUBJECT TO A 7 FOOT WIDE DRAINAGE EASEMENT ALONG ALL LOT LINES. LOTS MUST BE GRADED AND MAINTAINED SO AS TO MINIMIZE DRAINAGE TO ADJOINING PROPERTIES.
- TEMPORARY EASEMENTS FOR VEHICLE TURNAROUND AND MAINTENANCE OF PUBLIC UTILITIES. THE EASEMENTS WILL TERMINATE AFTER THE NEXT SUBDIVISION IS COMPLETED, INCLUDING ACCEPTANCE BY THE CITY OF ALL ROADWAY IMPROVEMENTS AND RECORDING OF THE PLAT OF SAID SUBDIVISION. THESE EASEMENTS ARE RECORDED IN THE OFFICIAL RECORDS OF BANNOCK COUNTY UNDER THEIR RESPECTIVE INSTRUMENT NUMBERS.
- LOT CORNER CUTOFF DIMENSIONS (BEARING AND DISTANCE) FOR L10 THROUGH L17 ARE EQUIVALENT TO THE CHORD BEARING DISTANCE OF A 20 FOOT RADIUS CURVE.
- LOT 1, BLOCK 1 WILL BE DEDICATED TO THE CITY OF POCATELLO FOR STORMWATER AND FUTURE EXTENSION OF CHUBBUCK ROAD. SEE OWNER'S CERTIFICATE ON SHEET 2 OF 2 OF THIS PLAT.
- J.R. SIMPLOT EASEMENT WIDTH WAS AGREED UPON BY BOTH PARTIES AS 35 FEET ADJOINING THE NORTH LINE OF SECTION 7 BY LETTER DATED MARCH 25, 1989.



SEE NOTE 3
INST. NO.

SEE NOTE 3
INST. NO.

POCATELLO CREEK DEVELOPMENT CO
INSTRUMENT NO. 378089

CITY ANNEXATION BOUNDARY LINE

LEGEND

- SECTION CORNER AS NOTED
- FOUND 1/4 CORNER AS NOTED
- FOUND 1/2 INCH REBAR WITH PLASTIC CAP STAMPED "RMES PELS 2341"
- FOUND 5/8 INCH REBAR WITH 2 INCH ALUM. CAP STAMPED "RMES PELS 2341"
- FOUND 2 INCH ALUM. CAP STAMPED "RMES PELS 2341" INSIDE MONUMENT VAULT
- SET 2 INCH ALUM. CAP STAMPED "RMES PELS 2341" INSIDE MONUMENT VAULT
- SET 1/2 INCH BY 24 INCH REBAR WITH PLASTIC CAP STAMPED "RMES PELS 2341" (LOT CORNERS AND AT END OF CURVES)
- SET 5/8 INCH REBAR WITH 2 INCH ALUMINUM CAP STAMPED "RMES PELS 2341"
- 5 / BLOCK 1** SUBDIVISION LOT / BLOCK NUMBER
- EXISTING SUBDIVISION LOT / BLOCK NO.
- SUBDIVISION BOUNDARY LINE
- SUBDIVISION LOT LINE
- STREET CENTERLINE
- EXISTING SECTION & STREET CENTERLINE
- EASEMENT SIDELINE
- EXISTING EASEMENT SIDELINE
- (R)** INDICATES A RESTRICTED LOT. SEE NOTE 5

BASIS OF BEARING

PER CITY OF POCATELLO DATUM BASED ON THE CENTRAL MERIDIAN OF IDAHO STATE PLANE EAST ZONE COORDINATE SYSTEM.

RECORDING INSTRUMENT NUMBER

GREENFIELD MEADOWS DIVISION 5

LOCATED IN THE NORTH EAST 1/4 OF SECTION 7,
TOWNSHIP 6 SOUTH, RANGE 35 EAST, BOISE MERIDIAN,
BANNOCK COUNTY, IDAHO



301 58th St. W. #138 * Williston, ND 58801 * (701) 572-0110
600 E. Oak St. * Pocatello, ID 83201 * (208) 234-0110
www.rmes.biz

REVISIONS	SURVEYED BY: JDK, SRM, JCE
1	OFFICE WORK BY: JLC, SOB
2	FIELD BOOK NO: N/A
PROJECT NO: 17104	DATE: MAY 2018
DRAWING: R:17/SATTERFIELD/GREENFIELD MEADOWS DIV. 5 - 17104/SURVICAD	
SCALE: 1 INCH = 100 FEET	SHEET 1 OF 2